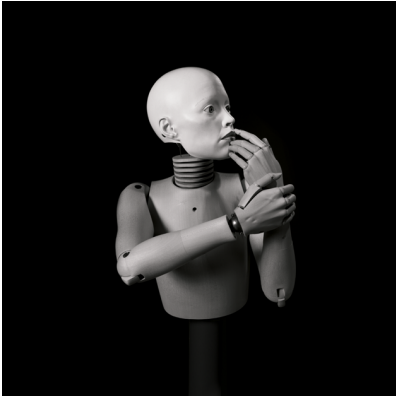
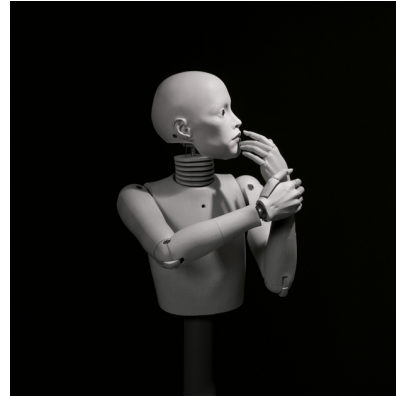


Studies for Animation, 1997-2005

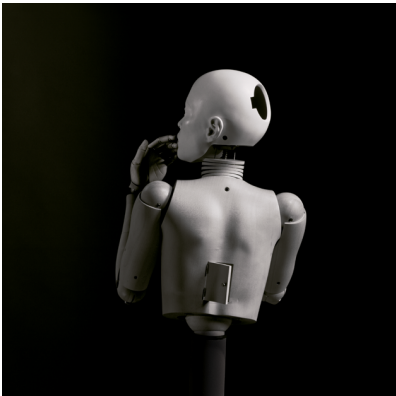
Chromogenic prints on Kodak Endura paper
Sequence of 14 images: 8 in black-and-white, 6 in color
Edition of 10, with 4 artist's proofs



Pose 1
24 x 24 inches



Pose 2
24 x 24 inches



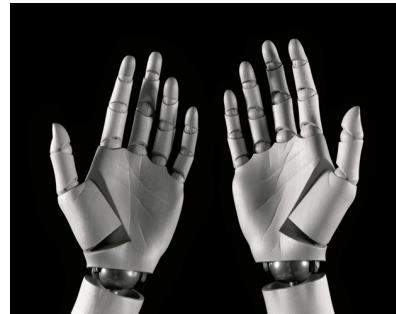
Pose 3
24 x 24 inches



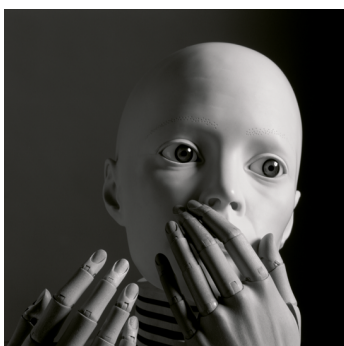
Pose 4
24 x 24 inches



Pose 5
24 x 24 inches



Pose 6
19 x 24 inches



Pose 7
20 x 20 inches

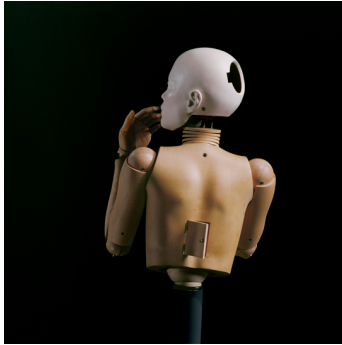


Pose 8
20 x 20 inches

ELIZABETH KING

Studies for Animation, 1997-2005

Chromogenic prints on Kodak Endura paper
Sequence of 14 images: 8 in black-and-white, 6 in color
Edition of 10, with 4 artist's proofs



Pose 3
20 x 20 inches



Pose 9
20 x 14 inches



Pose 6
19 x 24 inches



Pose 7
20 x 20 inches



Pose 10
20 x 17⁷/₈ inches



Pose 5
20 x 20 inches

Sculpture: Elizabeth King
Pupil, 1987-90
Porcelain, glass eyes, carved wood (Swiss pear), brass
Half life-size; all joints are movable
Poses and composition: Elizabeth King
Lighting and camera: Eric Beggs
Master Printer: Lauren Kylie Wright